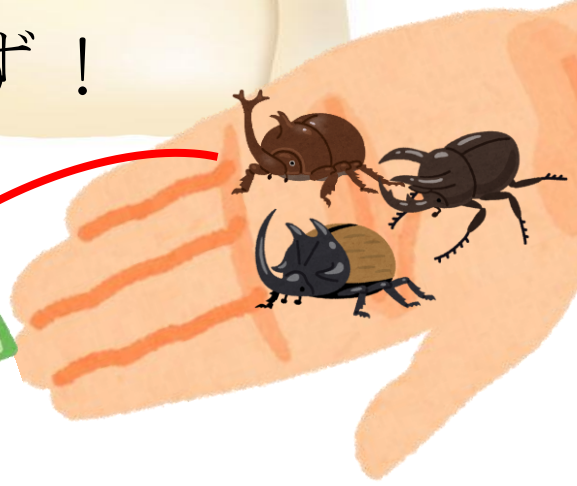
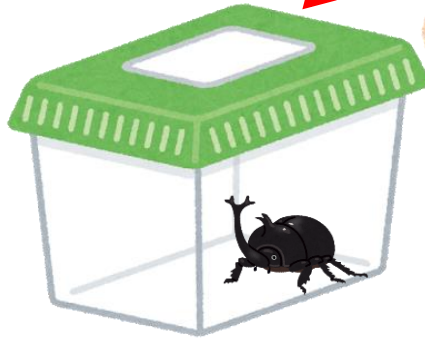




いちたす                      らっきー  
 1 + は ラッキー!  
 つぎの かず!

ふえるとなんびき?



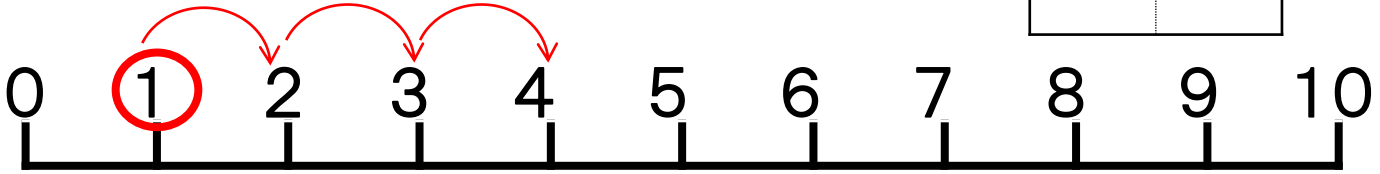
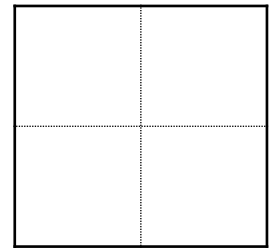
(しき)

1

+ たす

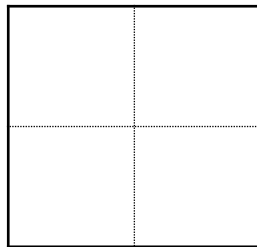
3

= は

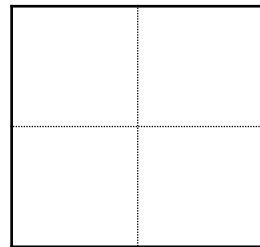


■ たしざんをやってみよう。

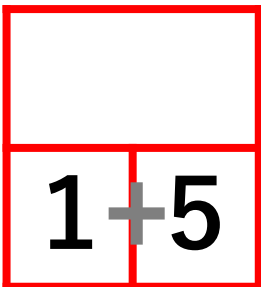
1 + 5 =



1 + 9 =



いつもの  
しかくで  
かんがえると...



いつもの  
しかくで  
かんがえると...

